

ITL Part Code - KF25T19P



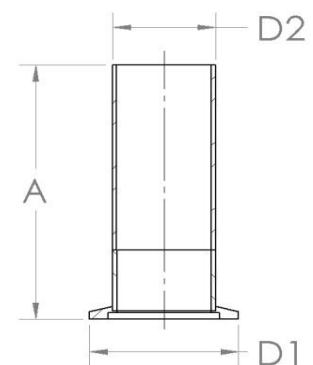
Specification

Material: 304L Stainless Steel

Graded seal tubulation terminating in a length of pyrex bakeable to 200°C at not greater than 2-3°C per minute.

NOTE: Dimensions subject to raw material supplier tolerances.

A	D1	D2
100 (3.94)	40 (1.57)	19 (0.75)



Specialist UK manufacturers and suppliers of standard and bespoke vacuum products.
For all enquiries please contact us on: